

# Hillview Gardens

## OREGON GROWN ORCHIDS

### Flowering Size Complex Seedlings

Complex Paphiopedilum seedlings, 3.25" pot size now available. Wholesale minimum order is one box of 25 plants. These are bench run selected plants from our most recent crosses. Selections will be five, ten, twenty or thirty of each cross depending on numbers ordered. Complex Paphiopedilums begin to bud in September/October in the Pacific Northwest and bloom from October to April, seven months of Complex flower season. Stock up now, the slipper season is just a few months away.

Complex Paphiopedilums are shipped bare root or in pot. Shipping is at cost via FedEx.

25 – 49 Plants \$ 17.00 each  
 50 – 99 Plants \$ 16.00 each  
 100 – 200 Plants \$ 14.00 each



### Flasks



#### **HP872 *Paph. fairrieanum*** ('Dark Lines' x 'Hillview' FCC/AOS)

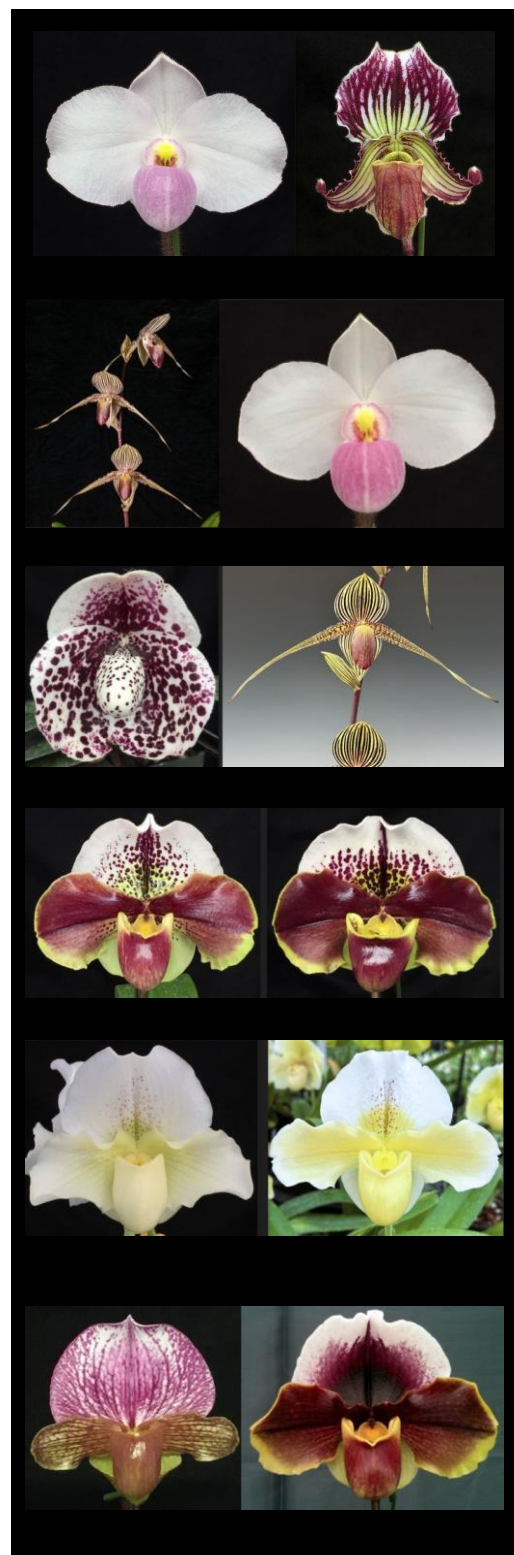
Two of our very best *Paph. fairrieanum* with exceptionally dark coloration brought together. This represents a third generation seedling from 'Hillview' FCC/AOS line breeding, we expect some very dark flowers from this new grex.

**\$ 300.00 – Flasks**

#### **HP904 *Paph. delenatii f. vinicolor*** ('5122' x '5722')

F2 sibling cross of *Paph. delenatii f. vinicolor*. The seedlings are growing vigorously in flask and are ready to pot out to community pot.

**\$ 200.00 - Flask**



**HP905 Paph. Black Diamond**  
**(*delenatii* '#2' x *fairrieae* '294-1')**

Remake of this stunning pink intersectional hybrid using outstanding parents. We are looking for good quality flowers from this remake.

**\$ 250.00 – Flasks**

**HP909 Paph. Delrosi**  
**(*delenatii* '#4' x *rothschildianum* 'Electra' HCC/AOS)**

Remake of a popular *rothschildianum* hybrid with 67 AOS awards. This remake utilizes a recently awarded *Paph. rothschildianum*.

**\$ 250.00 – Flask**

**HP903 Paph. Jyn Erso '#1'**  
**x *rothschildianum* 'Electra' HCC/AOS**

These should be much like *Paph. Rolfei* but with better shape.

**\$ 250.00 - Flask**

**HP897 Paph. Duncan's Thunder 'Big Clouds'**  
**x Rock Star '121519'**

Exceptional size and color is expected from this new grex.

**\$ 250.00 – Flask**

**HP881 Paph. White Lady 'Mirana'**  
**x Buena Bay '#1'**

An experimental cross for sure. Looking for more substance and whiter flowers.

**\$ 200.00 – Flask**

**HP891 Paph. charlesworthii 'Different Strokes'**  
**x California Girl 'Big Bear' B/CSA**

Intersectional hybrid between a species and a fine red complex *Paphiopedilum*. We like this type of breeding and look forward to flowering out some fine flowers from this new grex.

**\$ 250.00 – Flask**

## Selected Plants

**Paph. White Knight 'Clear Light' B/CSA, HCC/AOS**

*Paph. White Knight 'Clear Light'* HCC/AOS is an important parent yielding viable seed and is a fine show plant. Two previous growth and two new growths, one in bud.

**\$ 500.00 – Whole Plant – 5" pot**

**Paph. White Queen 'Diamond Tiara'**

*Paph. White Queen 'Diamond Tiara'* is an exceptional white that breeds readily and is award and show quality. The plant offered here in a 5" pot and has one previous growth and one growth in bud.

**\$ 500.00 – Whole Plant – 5" pot**

## Community Pots

Hillsview Gardens is offering the following Community Pots. They are in limited supply and offered on a first come basis. All flasks are potted out. We should have flasks available again sometime in 2024. Thank you from us here at Hillsview Gardens for your continued support.

**HP688 Paph. Angle Hair  
(Saint Swithin 'Dark Challenger' x *sanderianum* 'Select')**

Our continued foray into multiflorals simply to offer our customers some variety.

**\$ 175.00 – Compot**





**HP689 *Paph.* Sun Stone 'Hillsview' AM/AOS  
x *Paph.* Terry Jarvi 'Xicos II'**

Cutting edge quality flowers in green, yellow, and orange.

**Sold Out**

**HP690 *Paph.* Lady Isabel  
(*stonei* 'Madonna' x *rothschildianum* 'Electra' HCC/AOS)**

Another remake of a stunningly beautiful multifloral hybrid.

**\$ 175.00 – Compot**

**HP697 *Paph.* Emerald Brocade 'Emerald' AM/AOS  
x *Paph.* Optimus Prime 'Ursa Major'**

*Paph.* Emerald Brocade 'Emerald' is one of the best from the grex. Paired with an orange Optimus Prime is anyone's guess.

**\$ 200.00 – Compot**

**HP698 *Paph.* Emerald Brocade 'Emerald' AM/AOS  
x *Paph.* Mount Olympus 'Gold Cup'**

*Paph.* Greenvale 'Hillsview' is a parent on both sides. Solid green flowers, superb shape, cannot say enough about this new grex. Both flowers present quite flat.

**\$ 200.00 – Compot**

**HP699 *Paph.* Olympic Halo 'Alabaster'  
x *Paph.* Optimus Prime 'Ursa Major'**

Stunning pastels expected from this new grex. Both parents have outstanding green parents, we expect orange, honey, and green flowers.

**\$ 200.00 – Compot**

**HP702 *Paph.* Valerie Tonkin 'Hillbilly' AM/AOS  
x *Paph.* Terry Jarvi 'Xicos II'**

*Paph.* Valerie Tonkin is responsible for top quality flowers.

Paired with Terry Jarvi, we expect to see more sunset colors.

**\$ 200.00 – Compot**

**HP729 *Paph.* Pumpkin Pie 'Golden Glow Whopper'  
x *Paph.* Spotglen 'Doodlebug' HCC/AOS**

Looking for orange flowers with spots. *Paph.* Spotglen 'Doodlebug', is a superb parent in breeding complex Paphiopedilums.

**\$ 250.00 – Compot**



**HP732 *Paph. Santana* 'Noel'  
x *Paph. Jenna Marie* 'Sparkle' AM/AOS**

Cutting edge quality here, the Santana 'Noel', is a large stately flower. Jenna Marie is one of the best!

**\$ 250.00 – Compot**

**HP733 *Paph. Yo-yo Tricks*  
(*Paph. Grey Tricks* 'June Rain' x *Paph. bellatulum* 'Largo')**

Photo shows *Paph. Yo-yo Tricks* 'First' left, the first to flower from HP582. This is a remake, photos show two seedlings from the original cross. A brachy that is easy to grow and flower.

**\$ 175.00 – Compot**

**HP734 *Paph. Macabre Magical Moon* 'Mulino' AM/AOS  
x *Paph. Wood Wonder* 'Cove'**

Looking for a green background on the petals for the large dark spots to shine. The Macabre Magical Moon was awarded in March 2022.

**\$ 125.00 – Compot**

**HP737 *Paph. hookerae*  
(*Sellon Strain* #8' x *Sellon Strain* #2')**

*Paph. hookerae* has been a difficult one to get in flask and grow well. These are vigorous and should produce excellent quality flowers.

**\$ 250.00 – Compot**

**HP740 *Paph. Harold Koopowitz*  
(*rothschildianum* 'Electra' HCC/AOS  
x *malipoense* 'Green Moth' AM/AOS)**

Both parents are awarded. The *Paph. malipoense* 'Green Moth' is one of our best.

**\$ 200.00 – Compot**

**HP745 *Paph. Azores Eagle*  
(*callosum* 'Chico's Coloratum' x *Paph. viniferum* 'Jac')**

This cross was made by a friend and we are offering a few community pots. Last Compot!

**\$ 250.00 – Compot**

**HP754 *Paph. White Knight* 'Clear Light' HCC/AOS  
x *Paph. Emerald Brocade* 'Emerald' AM/AOS**

Expectations are for green and white flowers of exceptional quality. Both are superb flowers so it follows that the progeny will be quite good. Only one available.

**\$ 300.00 - Compot**



**HP759 *Paph. White Lady 'Mirana'*  
x *Paph. Olympic Halo 'Alabaster'* HCC/AOS**

*Paph. White Lady* is (White Knight x Ice Age), flowers will be white and judging from other hybrids derived from Olympic Halo, the dorsal sepals on the progeny should be outstanding.

**\$ 250.00 – Compot**

**HP767 *Paph. Double Up 'Wide Petals'*  
x *Paph. Sorcerer's Stone 'Yellow Desire'***

Large green flowers with good stems expected from this new grex. Double Up is (Stone Lovely x Elfstone), and Sorcerer's Stone is (Pacific Shamrock x Stone Lovely).

**\$ 250.00 – Compot**

**HP798 *Paph. armeniacum* ('#1' x '021721')**

This is an outcross between two distinct populations. Our goal here is to flower out a large population to select for future breeding. Rarely offered species.

**\$ 300.00 - Compot**

**HP811 *Paph. Western Sky 'Aldarra'*  
x *henryanum 'Hoodview'* HCC/AOS**

*Paph. Western Sky* is (Yerba Buena x *charlesworthii*).

I would expect flower to look like larger versions of *Paph. Doll's Kobold*. The *Paph. Western Sky* is one of the best from the grex.

**\$ 250.00 – Compot**

**HP818 *Paph. Golden Palace 'Midas Touch'* HCC/AOS  
x *Paph. armeniacum 'Golden Globe'***

Expect larger, heavier texture flowers that look like giant *Paph. armeniacum* flowers. Only one compot left!

**Sold Out**

**HP819 *Paph. Polar Lights*  
*Fanaticum #7* x *fairrieatum 'Ugly Duckling'***

Beautiful pink and chartreuse combination, about what you would expect from this combination. Only one available.

**\$ 300.00 - Compot**

**HP820 *Paph. White Lady 'Mirana'*  
x *Paph. Mystic Isle 'White Heart'***

Expectations are for superb quality white flowers with fine spotting.

**\$ 250.00 – Compot**





**HP822 *Paph. Jyn Erso*  
(‘Revenge’ x ‘Eadu’)**

An F2 sibling cross of this darkly spotted Brachypetalum hybrid that is easy to grow and flower. Exceptional flowers are expected from this F<sub>2</sub> sib cross.

**\$ 200.00 – Compot**

**HP824 *Paph. Tommy Egger ‘Remembrance’*  
x *Paph. Buddy Fun Mark ‘Courage’***

Tommy Egger is a big Cruella hybrid. Crossed with the Buddy Fun Mark, we expect large spotted flowers.

**\$ 250.00 - Compot**

**HP829 *Paph. Fall Magic ‘Honeycomb’ AM/AOS*  
x *Paph. Optimus Prime ‘Ursa Major’***

We are anticipating orange flowers from this new grex. The Fall Magic is a flower that catches your eye for quality and conformation.

**\$ 250.00 – Compot**

**HP830 *Paph. Antrim ‘Luminous’ AM/AOS*  
x *Paph. Emerald Brocade ‘Emerald’ AM/AOS***

Both parents present flowers that are flat. *Paph. Antrim ‘Luminous’* has a mirror image ventral sepal and opens green and finishes a bright yellow, we are hoping for both yellow and green flowers from this new grex.

**\$ 225.00 – Compot**

**HP834 *Paph. Charlandzegary*  
(*Fanaticum* ‘#9’ x *micranthum* ‘Woody’s’ AM/AOS)**

Remake, we have one of these in flower as I write this and it's one of the best we have seen, only one community pot will be released.

**\$ 300.00 - Compot**

**HP837 *Paph. haynaldianum*  
(‘Josephine’ x ‘#8’)**

Perhaps our best offering of this magnificent species.

Both are selected cultivars from the Award of Quality cross. Both present with petals held horizontally. Award Quality flowers are expected from this offering.

**\$ 250.00 - Compot**

**HP838 *Paph. Jenna Marie ‘Sparkle’ AM/AOS*  
x *Paph. Blood Moon ‘December’***

Cutting edge red and spotted reds from this new grex.

**\$ 300.00 - Compot**



**HP839 *Paph.* Ruby Cabochon 'Red Delicious'  
x *Paph.* Blood Moon 'December'**

We have selected quite a few quality flowers from our original cross of *Paph.* Blood Moon. We look forward to reflowering a good number this season. Expect cutting edge red flowers from this new grex.

**\$ 250.00 – Compot**

**HP840 *Paph.* Provocation 'Seductive Miss'  
x *Paph.* Luther Pass 'Sensation' AM/AOS**

*Paph.* Provocation is (Gridlock x Winston Churchill), OZ breeding. Crossed with one of the best *Paph.* Luther Pass, we expect quality spotted red complex from this new grex.

**\$ 250.00 – Compot**

**HP843 *Paph.* Duncan's Thunder 'Mysterious'  
x *Paph.* Santana 'Noel'**

Duncan's Thunder are large, well balanced flowers. We expect both red and spotted reds from this new grex.

**\$ 250.00 – Compot**

**HP848 *Paph.* Terry Jarvi 'Xico's II'  
x *Paph.* Optimus Prime 'Ursa Major'**

Chances for orange flowers with this combination are high. Good form is assured as both parents have full dorsal and ventral sepals.

**\$ 300.00 – Compot**

**HP850 *Paph.* Don Egger – F2 sibling cross  
(*'Luanne'* HCC/AOS x *'Black Rain'*)**

The Don Egger original remake didn't produce as many seedlings as we would have liked so we offer an F2 generation of these huge spotted reds.

**\$ 250.00 – Compot**

**HP851 *Paph.* Enchantingly Wood 'Chocolate Chip'  
x *Paph.* Dot's Spots 'Dave's Gift'**

Wide petals on these spotted Maudiae.

**\$ 175.00 - Compot**

**HP852 *Paph.* Enchantingly Wood 'Chocolate Chip'  
x *Paph. fairrieanum* 'Radiation'**

We have an appreciation for *Paph. fairrieanum* intersectional hybrids. Here we have a new one.

**\$ 175.00 - Compot**





**HP853 *Paph. Aztec Jade*  
(Emerald Brocade 'Lemongrass' HCC/AOS  
x *Paph. malipoense* 'Green Moth' AM/AOS)**

This is a remake of an exceptional intersectional cross between a complex green hybrid and the species *Paph. malipoense*. Photo shows *Paph. Aztec Jade* 'Hillsview' FCC/AOS, one of the best to flower from the original grex. Only a few community pots.

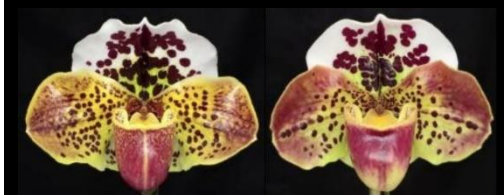
**\$ 300.00 – Compot**



**HP854 *Paph. Night Sky* 'Warp Nine'  
x *Paph. Blood Moon* 'December'**

*Paph. Night Sky* 'Warp Nine', is from Jim Burkey at Orchids Royale. Paired with one of our best *Paph. Blood Moon*, quality red flowers are expected from this new grex. Cutting edge.

**\$ 250.00 – Compot**



**HP857 *Paph. Thunder Doll* 'Palindrome'  
x *Paph. Starship* '011521)**

*Paph. Spotglen* 'Doodlebug' HCC/AOS is a parent of both *Paph. Thunder Doll* and *Paph. Starship*. The colors are vibrant in both parents used here. Cutting edge spots are expected from this new grex.

**\$ 250.00 – Compot**



**HP858 *Paph. Double Up* 'Walter Marx'  
x *Paph. malipoense* 'Green Moth' AM/AOS**

We are very excited about this type of breeding between Complex and Parvissepals. The very best will be exceptional. Only two compots available.

**\$ 250.00 – Compot**



**HP861 *Paph. delenatii*  
(*'Divinity'* x *'Etheridge #3'*)**

An outcross of a species from Vietnam. We have been wanting a nice crop of standard *Paph. delenatii*. The first Parvissepals to be introduced into cultivation, it remains a favorite.

**\$ 175.00 – Compot**